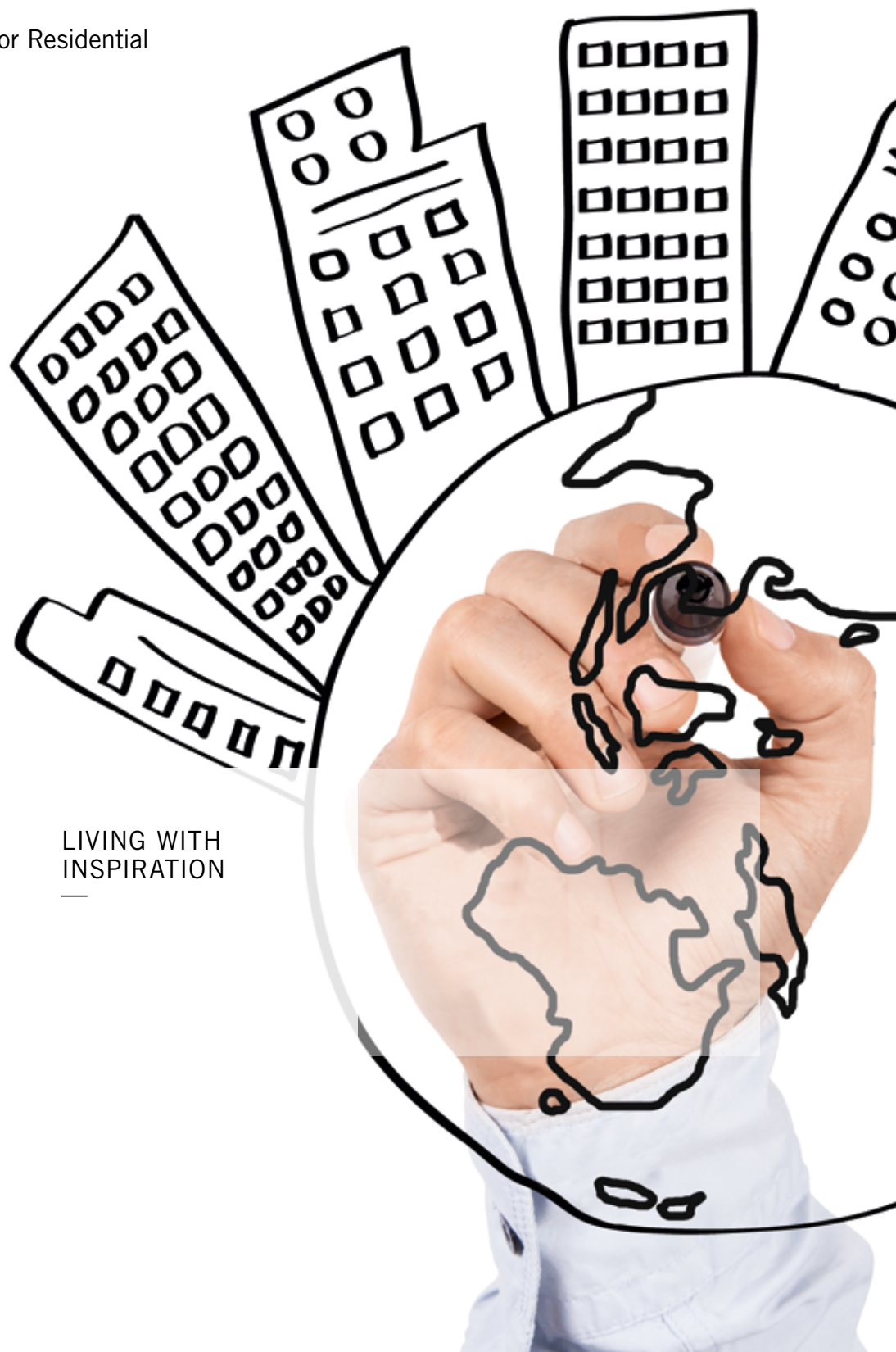




# APARTMENT AND RESIDENTIAL

---

Premium Access Solutions for Residential



APARTMENT  
INTERIOR  
SOLUTIONS

---

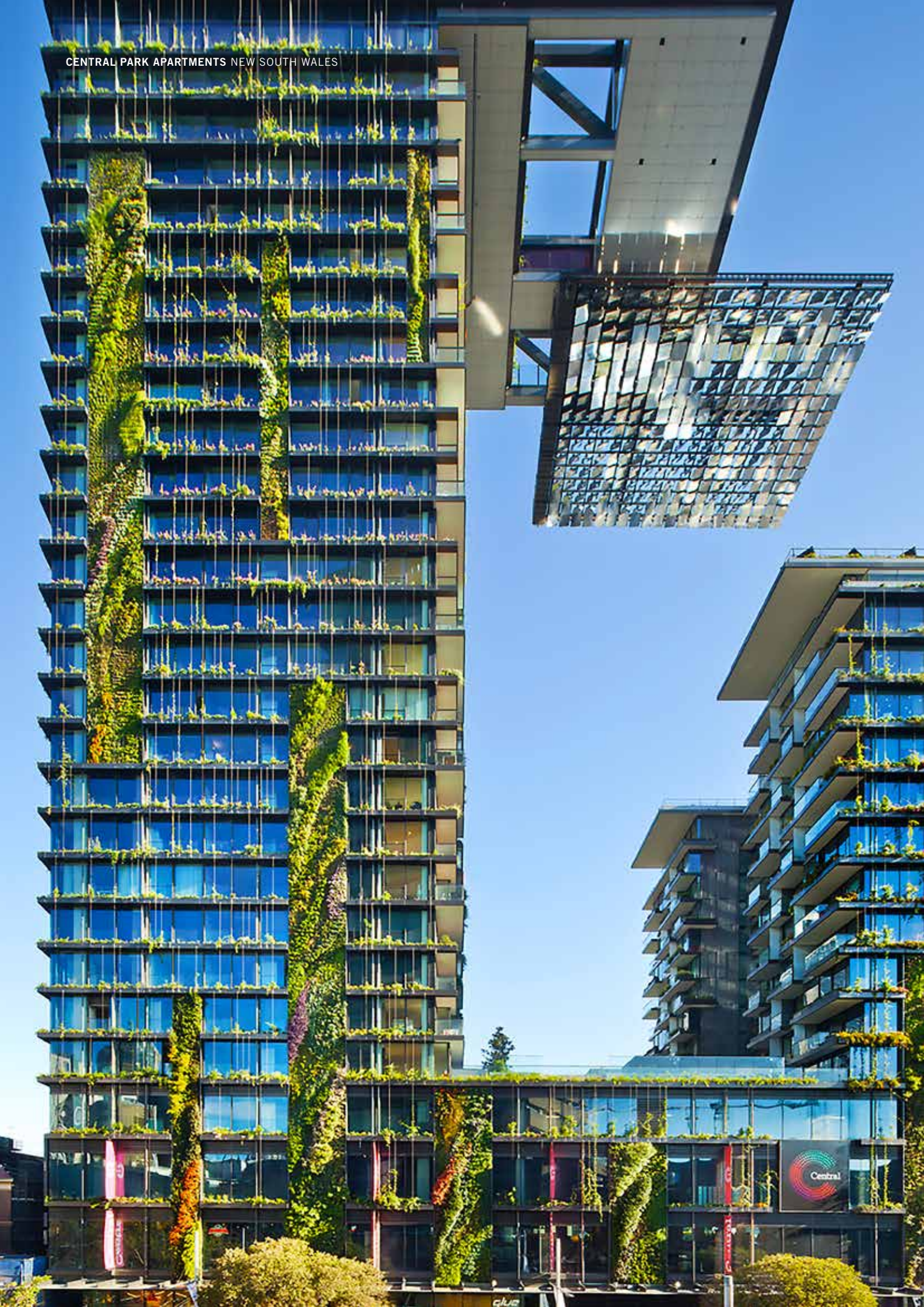
LIVING WITH  
INSPIRATION

---



MDZ-2009  
GECA 28-2006-  
FURNITURE AND FITTINGS







# CONCEPTS COORDINATED IN EVERY DETAIL

---



## Your next apartment development.

With proven practical ideas provided by DORMA, you can design and coordinate everything from a welcoming foyer entrance to solutions for common apartment areas such as the gymnasium, the swimming pool right through to the apartment entry and interior, giving you virtually every functional solution you require for your door and security applications.

Planning and designing apartments with foresight means ensuring quality from start to finish. DORMA have an experienced team of specification writers who can discuss with you your project in detail and offer a no cost and obligation free hardware scheduling service. All of this whilst the practicalities of budget are kept in mind.





**Rack and Pinion** is part of our ClassicLine series of door closers. It's very compact body dimensions, ease and speed with which it can be installed and can be easily adapted to differing door widths makes it the perfect closer for apartment entrance doors.



**Asymmetric Pinion Technology** door closer with the aesthetic appeal of slide channel and cubic body design. Spring strength adjustable by hex key and clip on cover to conceal body fixings makes it the perfect choice for use throughout the entire apartment complex.



**Fully Concealed Cam Action** door closer is designed for concealed installation in the door leaf and frame. Suitable for almost every type of door, it offers a wide variety of functions for both single or double doors and flexibility combined with a high level of quality.

# INTERIOR SOLUTIONS: STYLE AND FUNCTION



Choosing the right lever design can set any door apart from the next and with the “Vision range” of levers provides a pleasing and aesthetic choice to complement your building design.

Functional yet stylish Vision range of door closers on the apartment entrances consists of a classic appearance yet a modern cubic form harmoniously balancing with the entrance and lever range.

Of course security is made assured using the DORMA mortice lock. The Vision range of levers are superbly completed with a matching range of escutcheons and turns. Our mortice lock utilises an Australian oval cylinder and can be keyed

into the building master key system if desired providing a one key solution for use throughout the apartment complex.

All stainless steel levers are Green Star Rated “A” Level GECA certification.



**The Vision range** of door furniture was designed with the residential market in mind providing lever styles that harmoniously blend with any apartment design with matching escutcheons and turns complete this series.



**Madinoz Tubular range** door furniture range is manufactured from grade 316 stainless steel. A characteristic feature of Stainless Steel door furniture is the naturally gleaming finish bringing a modern and clean appearance.



**Madinoz Solid range** door furniture on round rose or DORMA plate options are made from the very durable grade 316 stainless steel providing superior wear resistance. With a number of lever designs to choose from the solid range rounds fits perfectly for both apartment doors and common areas.



# BATHROOM: FUNCTIONAL AND CHIC

From the single apartment to functional family bathroom or modern chic to multifunctional, DORMA's Madinoz brand has an extensive range of bathroom furniture and accessories.

Bathroom accessories are an essential, but often overlooked component of the bathroom. More than just practical, Madinoz bathroom accessories and furniture come in a variety of styles to allow you to create

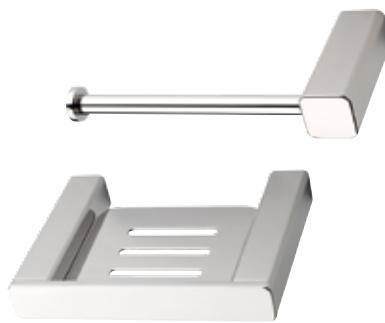
the look you want while fulfilling all your functional needs. Our diverse range of bathroom accessories and furniture includes towel rails, soap dishes, toothbrush holders, and more.

Add the finishing touches to your bathroom with Madinoz's collection of bathroom accessories and furniture.



**The 7100 Series** of bathroom furniture:

- 316 Stainless Steel
- Finish available in Satin Stainless Steel and Polished Stainless Steel
- Range includes; round towel rail, single and double towel rails, toilet roll holder, soap dish and soap tray



**The 7500 Series** of bathroom furniture:

- 316 Stainless Steel
- Finish available in Satin Stainless Steel and Polished Stainless Steel
- Range includes; round towel rail, coat hook, single and double towel rails, toilet roll holder, soap dish and soap tray



**The 7600 Series** of bathroom furniture:

- 316 Stainless Steel
- Finish available in Satin Stainless Steel and Polished Stainless Steel
- Range includes; hand towel rail, coat hook, single and double towel rail, toilet roll holder, soap dish and soap tray

# LIVING WITH INSPIRATION

---



The **AGILE** sliding door track offers versatility in the truest sense of the word. Sliding glass doors provide huge space saving benefits, minimalist design and, combined with proven roller technology.

When it comes to creating apartments with a modern flair and a point of difference DORMA have a vast array of products that can suitably make a statement and allow you additional design freedom. Products such as the low profile low energy automatic sliding door operator **MAGNEO** using magnetic drive technology coupled with frosted patterned glass could make a beautiful entrance door to the modern bathroom or kitchen.

Or providing a large walk in robe with glass entry doors resembling a boutique store made possible with the very sleek DORMA Agile sliding door system and pull handles. These are just a few of the many possible products within our range that could assist in living with inspiration.



Slender construction and the timeless and elegant DORMA Contur Design, the **MAGNEO** operator system enables single-panel sliding doors to be used in the interior of buildings without difficulty and uses quiet magnetic drive technology.



The **MANET**, sleek, industrial design sliding doors used in the interior of buildings.



DORMA Australia  
Head Office  
46-52 Abbott Road  
HALLAM  
Victoria 3803  
Phone 1800 675 411  
info.au@dorma.com  
www.dorma.com

MADINOZ  
Unit 3  
1 - 7 Ada Avenue  
BROOKVALE  
NSW 2100  
Phone (02) 9939 2007  
sales@madinoz.com.au  
www.madinoz.com.au

DORMA NZ Limited  
Head Office  
Building P  
61-69 Patiki Road  
AVONDALE  
Auckland 1026  
Phone 0800 436 762  
info.nz@dorma.com